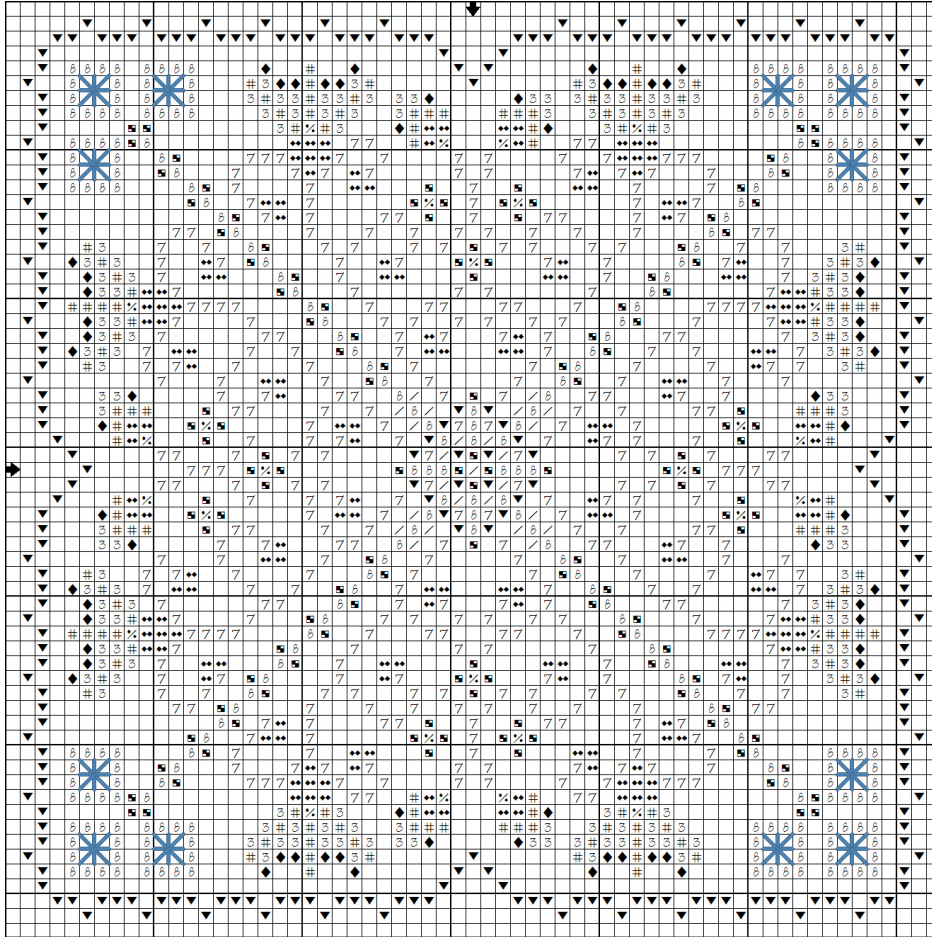


# Aegean Garden

by *Turquoise Graphics & Designs*

www.tgdcharts.com

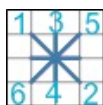


Design Size: 61 x 61 stitches

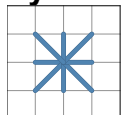
Fabric: 28 count Cream Linen (stitched over 2); this design can also be worked on Aida.

Symbol	Strands	Type	Number	Color
f	2	Caron Waterlilies	137	Copper
7	2	Caron Waterlilies	065	Emerald
8	2	Caron Waterlilies	207	Bermuda Reef
%	2	DMC	782	Topaz-DK
/	2	DMC	820	Royal Blue-VY DK
'	2	DMC	825	Blue-DK
"	2	DMC	3685	Mauve-DK
3	2	DMC	3687	Mauve
b	2	DMC	3689	Mauve-LT
#	2	DMC	3803	Mauve-MD

Specialty Stitch (used in the corners). Note that each square here represents 2 threads of linen. Consequently, this stitch can easily be worked on Aida (if you prefer).



**Symbol**



**Strands**

1

**Type**

DMC

**Number**

825

**Color**

Blue-DK

To get started, mark the center of your fabric, and start stitching from the center of your design. This ensures that the final work will be centered on the fabric.

Below are a few photos of the design as I was working on it. You will notice that I worked most (if not all) of the stitches using a single color first, before moving onto the next color. For this particular design, due to its repetitive nature, this method worked best as it helped speed up the stitching process.



When all full stitches were complete, I added the specialty stitches in the corners. Final photo below shows all the other details filled in.



Copyright © 2009 Turquoise Graphics & Designs. *Permission is granted to reproduce for personal use only. These charts cannot be reproduced, electronically or otherwise, or sold without the express written permission from Turquoise Graphics & Designs.*

P.O. Box 65494 Vancouver, WA 98665 USA

[www.tgdcharts.com](http://www.tgdcharts.com)